



TURBOFARMER MEDIUM DUTY

TF35.7 G



PERFORMANCE AND FEATURES
TF35.7 G
TF35.7-115G
PERFORMANCE

Total unladen weight (kg)

6650

6650

Maximum capacity (kg)

3500

3500

Lifting height (m)

6,6

6,6

Maximum reach (m)

3,5

3,5

Maximum operating height (m)

6,5

6,5

Maximum operating reach (m)

1,3

1,3

Capacity at maximum height (kg)

3500

3500

Capacity at maximum reach (kg)

1350

1350

Lateral boom movement (mm)

-

-

Tilting correction (%)

-

-

Boom sections

2

2

POWERTRAIN

Turbo motor

Deutz TD2.9

Deutz TCD3.6

Displacement/cylinders

2900/4

3600/4

Engine Power (kW/HP)

55,4/75

85/115

Anti-pollution technology

STAGE IIIB, DOC

STAGE IV, SCR+DOC

Reversible fan

●

●

Maximum speed (km/h)

40

40

Fuel tank (l)

80

100

AdBlue tank (l)

-

12

Hydrostatic transmission

● - 2V

● - 2V

EPD

-

●

Axles

Axial

Axial

Reduction hub

Epicyclic

Epicyclic

Machine brakes

Dry disc

Dry disc

Automatic parking brake

●

●

HYDRAULIC

Hydraulic pump

Gear

Gear

Flow rate/pressure (l/min – bar)

98-210

98-210

Hydraulic tank

85

85

Hydraulic outlet at the top of the boom

●

●

Rear hydraulic outlets

○

○

CAB

Cab configuration

ECO

ECO

MCDC

-

-

FOPS LIV II cab

●

●

ROPS cab

●

●

Cab commands

Electrohydraulic joystick

Electrohydraulic joystick

Tilting Cab

-

-

Reverse shuttle

Dual reverse

Dual reverse

CONFIGURATION

Cab suspension

-

-

Boom suspension

○

○

Suspension on axles

-

-

Work headlights on cab

○

○

Sun blind

○

○

Tac-lock

●

●

Provision for a platform

-

-

Two floating forks

●

●

Inching-Control

●

●

Four-wheel drive

●

●

Four-wheel steering

●

●

Three steering modes

●

●

Standard tyres

405/70-24"

405/70-24"

Optional tyres

460/70-R24"

460/70-R24"

Stabilisers

-

-

Turret rotation

-

-

Type approval as an agricultural tractor

○

○

Approval with PNEUMATIC braking

○

○

Approval with HYDRAULIC braking

○

○

PTO

-

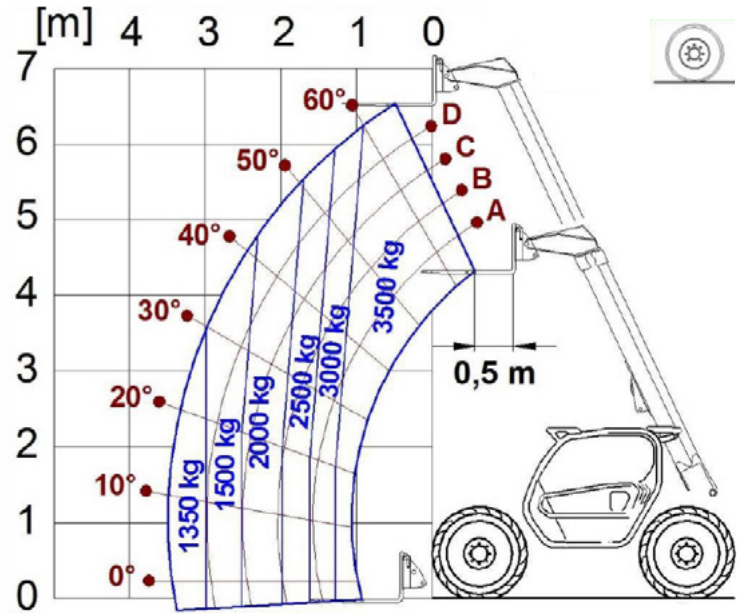
-

3-point linkage

-

-

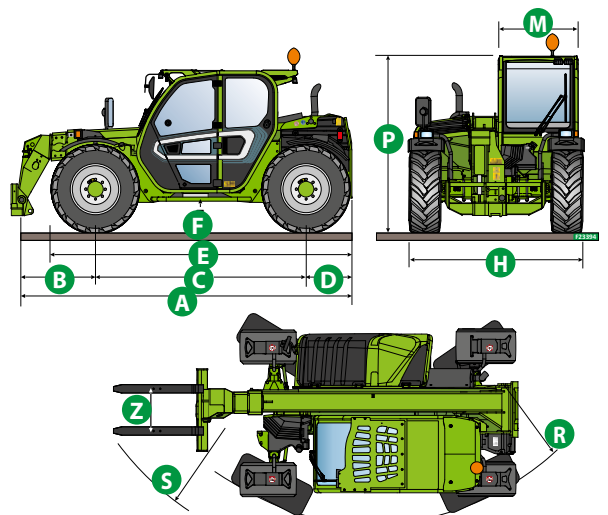
LOAD CHARTS



TF35.7

DIMENSIONS

	TF35.7		
A (mm)	4310		
B (mm)	970		
C (mm)	2740		
D (mm)	600		
E (mm)	3910		
F (mm)	380		
H (mm)	2250		
M (mm)	995		
P (mm)	2240		
R (mm)	4095		
S (mm)	4740		
Z (mm)	850		



GLOSSAR

SCR	Selective Catalyst Reduction , solution used for the reduction of NOx in the exhaust gases through the injection of a liquid - UREA (AdBlue) - into the exhaust gases.
DPF	Diesel Particulate Filter , a solution used to reduce fine particle emissions in exhaust gases
DOC	Diesel Oxidation Catalyst , a solution used to reduce carbon monoxide (CO) and hydrocarbons in exhaust gases
EGR	Exhaust Gas Recirculation , a solution used to reduce NOx in exhaust gases by recirculating gas inside the combustion chamber of the engine.
1-2V	1 or 2 speed Merlo gearbox
CVTronic	Continuous variation Merlo gearbox , for constant acceleration without loss of torque
EPD	Eco Power Drive , Merlo electronically-controlled hydrostatic transmission Electronic, enables effective RPM management in order to reduce overall fuel consumption by the machine
EPD Plus	In addition to the EPD Control, it is also possible to work using Speed Control (maintaining a constant travel speed) and Heavy Load (management of RPM in order to maximise performance for tasks such as: bucketing operations, heavy duty unloading, etc.)
EPD Top	In addition to the EPD Plus control function, this enables the RPM to be managed directly using the joystick
Gear	Fixed displacement pump with gears , combined with an open centre hydraulic distributor
LS	Variable displacement pump with Load Sensing control, combined with a closed centre hydraulic distributor
LS+FS	Variable displacement pump with Load Sensing control, combined with a closed centre hydraulic distributor equipped with solenoid valves and Flow Sharing control.
Kabine ECO/PREMIUM	MODULAR type cabin with simplified or PREMIUM equipment
MCDC	Merlo Dynamic Load Control, electronic control of the machine's anti-overturn system. • Light : Simplified version; • Complete : Version with display in cab.
FOPS	Falling object protective structure, the system which shields the operator from heavy objects falling onto the cab. Two levels: • FOPS Liv I : Object with a weight of 45 kg falling from 3 metres • FOPS Liv II : Object with a weight of 227 kg falling from 5.2 metres
ROPS	Roll-over protection system (or roll-over protection structure), the system that protects the operator if the vehicle rolls over
Finger Touch	Driving direction inversion system mounted on the steering column
Dual Reverse	Dual driving direction inversion system, on both the steering column and the joystick
Tac-lock	Hydraulic attachment clamping system controlled from the cab



MERLO S.P.A.

Via Nazionale, 9
12010 S. Defendente di Cervasca
(Cuneo) Italia
Tel. +39 0171 614111
Fax +39 0171 684101

info@merlo.com
www.merlo.com

