

**D-SERIES CRAWLER EXCAVATORS
CX290D MATERIAL HANDLING /
SCRAP LOADING**

CASE
CONSTRUCTION



**TIER 4
FINAL
EU STAGE IV**

**IT'S TIME
FOR MORE**

www.casece.com
**EXPERTS FOR THE REAL WORLD
SINCE 1842**

MAIN REASONS TO CHOOSE THE D-SERIES



HIGH RELIABILITY

- Reliability and durability with the new redesigned arm, boom and undercarriage.
- Optional hydrostatic reversible fan to match the real cooling demand, reducing power absorption and reducing maintenance needs thanks to the reversing mode



HIGH VERSATILITY

- A choice of booms and arms for both material handling and scrap loading applications provide superior reach and lifting capability.
- Material Handling version (MH): Purposely built and 5 m arm.
- Scrap Loading version (SL): reinforced straight boom and gooseneck arm.



HIGH EFFICIENCY

- Energy saving system to take advantage of all fuel saving opportunities.
- High levels of AdBlue autonomy with large AdBlue tank and low additive consumption.



TIER4 FINAL/STAGE IV ENGINE

- Selective Catalytic Reduction after-treatment system and Diesel Oxidation Catalyst.
- DPF-free solution saves time and maintenance costs, in addition to delivering a powerful and fuel efficient performance.



PRODUCTIVITY

- Faster cycles thanks to improved hydraulic system.
- Faster arm open speed provides an advantage when tossing scrap over.
- Commanding view of the working area from a height of 5 meters.
- Rigid elevating structure to work at the most productive.
- Superior reach and lifting capacity, makes short work of moving all sorts of waste, logs, garbage and scrap.



SAFE OPERATION

- New device prevents interference between the machine and its attachments through sensors on the bucket cylinder.
- Emergency cab lowering device operated hydraulically, further enhancing safety.
- Factory fitted travel alarm for greater safety on the jobsite around the machine.



COMFORTABLE CAB

- Superior cab structure with ample legroom for the operator.
- Fully adjustable workstation.
- Improvements to the pilot circuit reduce front attachment shock at full stroke.
- Less shaky cab, better comfort and greater safety around the machine.



BETTER VISIBILITY

- Standard rear and side camera for maximum visibility.
- New LED working light package, which is more than three times brighter than its halogen equivalent.

ENGINE

Model _____ ISUZU AQ-4HK1X
 Type _____ Water-cooled, 4-cycle diesel, 4-cylinder in line, High pressure common rail system (electric control), turbocharger with air cooled intercooler, SCR system.

Number of cylinders / Displacement (l) _____ 4 / 5.52
 Emissions level _____ Tier 4 final / Eu stage IV
 Bore & stroke (mm) _____ 115 x 125

Rated flywheel horse power

SAE J1349, ISO 9249 _____ 132.1 kW / 177 hp at 2000 min⁻¹
 ISO 14396 _____ 140 kW / 188 hp at 2000 min⁻¹

Maximum torque

SAE J 1349, ISO 9249 _____ 621 N-m at 1800 min⁻¹
 ISO 14396 _____ 642 N-m at 1800 min⁻¹

HYDRAULIC SYSTEM

Main pumps _____ 2 variable displacement axial piston pumps with regulating system
 Max. oil flow _____ 2 x 234 l/min at 2000 min⁻¹

Working circuit pressure

Boom/Arm/Bucket (MPa) _____ 34.3 - 37.3 with auto power boost
 Swing circuit (MPa) _____ 27
 Travel circuit (MPa) _____ 34.3

Pilot pump

_____ 1 gear pump
 Max. oil flow (l/min) _____ 20
 Working circuit pressure (MPa) _____ 3.9

Boom Cylinders

Bore (mm) _____ 140
 Stroke (mm) _____ 1126

Arm Cylinder (Dual cylinder)

Bore (mm) _____ 125
 Stroke (mm) _____ 1280

Bucket Cylinder (only CX290D Material Handling)

Bore (mm) _____ 120
 Stroke (mm) _____ 1010

SWING

Swing Motor _____ Fixed displacement axial piston motor
 Maximum swing speed (min⁻¹) _____ 6.5
 Swing torque (Nm) _____ 69800

FILTERS

Suction filter (µm) _____ 105
 Return filter (µm) _____ 6
 Pilot line filter (µm) _____ 8

ELECTRICAL SYSTEM

Voltage (V) _____ 24
 Alternator (Amp) _____ 50
 Starter (kW) _____ 24 V 5.0
 Battery _____ 2x12V 92 Ah/5 HR

UNDERCARRIAGE

Travel motor _____ Variable displacement axial piston motor
 High travel speed (Automatic travel speed shifting) (km/h) _____ 5.5
 Low travel speed (km/h) _____ 3.5
 Drawbar pull (KN) _____ 196
 Number of carrier rollers (each side) _____ 2
 Number of track rollers (each side) _____ 9
 Number of shoes (each side) _____ 51
 Type of shoes (MH/SL) _____ Triple grouser shoes / flat shoes
 Gradeability _____ 70 % (35°)

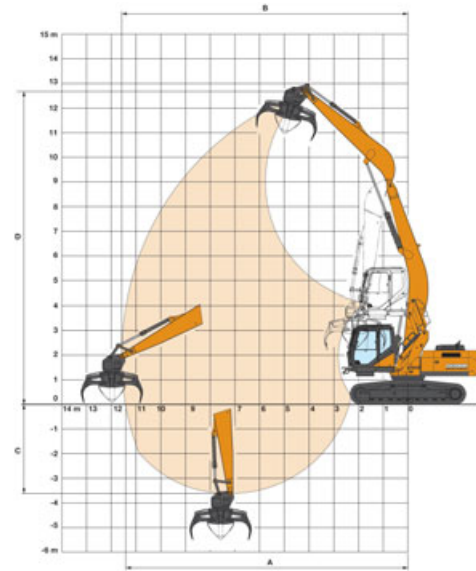
SOUND LEVEL

External guaranteed sound level
 (EU Directive 2000/14/EC) _____ LwA 102 dB(A)
 Operator cab sound pressure level (ISO 6396) _____ LpA 70 dB(A)

CIRCUIT AND COMPONENT CAPACITIES

Fuel tank (l) _____ 410
 Hydraulic system (l) _____ 250
 Hydraulic tank (l) _____ 147
 Adblue tank (l) _____ 120

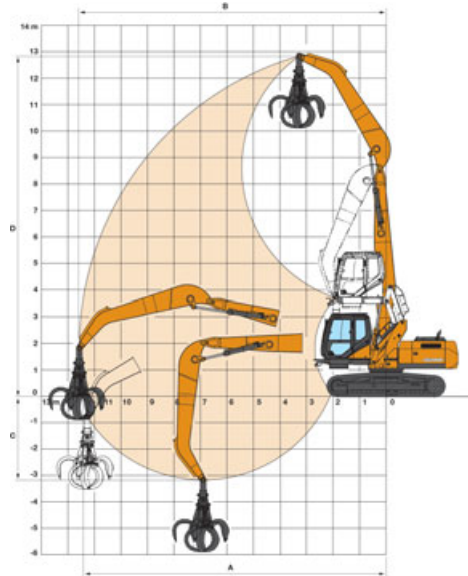
PERFORMANCE DATA CX290D MH



Arm 5.0 m

| | mm | |
|--------------------------|-------|----|
| Boom length | 7100 | |
| A Maximum reach at GRP | 11410 | mm |
| B Maximum reach | 11580 | mm |
| C Maximum depth | 3610 | mm |
| D Maximum digging height | 12680 | mm |

PERFORMANCE DATA CX290D SL



Arm 5.80 m

| | mm | |
|--------------------------|-------|----|
| Boom length | 7400 | |
| A Maximum reach at GRP | 12770 | mm |
| B Maximum reach | 12920 | mm |
| C Maximum depth | 3890 | mm |
| D Maximum digging height | 14420 | mm |

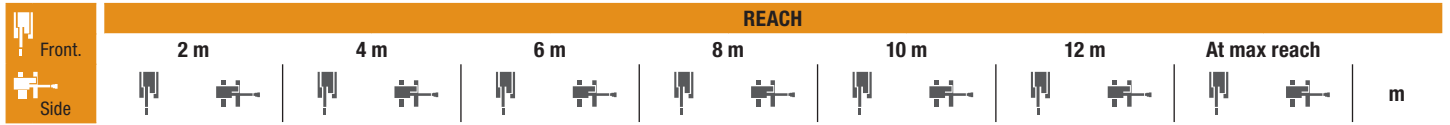
WEIGHT

With operator, lubricant, coolant and full fuel tank, 600 mm grouser shoes, front attachment

| | Weight | |
|-----------|----------|--------------------------|
| CX290D MH | 32800 kg | Counterweight 8150 kg |
| CX290D SL | 32600 kg | |

TRANSPORT DIMENSIONS

| | mm | CX290D MH | CX290D SL |
|---|----|-----------|-----------|
| Overall length (with attachment) | mm | 10230 | 10650 |
| Overall height (to top of guardrail) | mm | 3360 | 3360 |
| Undercarriage overall width (with 600 mm shoes) | mm | 3190 | 3190 |



CX290D MH - Standard arm 5.0 m length, 600 mm shoes.

| | | | | | | | | | | | | | | | |
|--------|--------|--------|--------|--------|--------|-------|-------|-------|-------|------|--|--|-------|-------|-------|
| 12.0 m | | | | | | | | | | | | | 5870* | 5870* | 5.63 |
| 10.0 m | | | | | 7150* | 7150* | 5560* | 5560* | | | | | 4810* | 4810* | 8.27 |
| 8.0 m | | | | | 7110* | 7110* | 6420* | 6300 | | | | | 4450* | 4380 | 9.85 |
| 6.0 m | | | | | 7800* | 7800* | 6710* | 6140 | 5990* | 4240 | | | 4360* | 3660 | 10.84 |
| 4.0 m | 23890* | 23890* | 12680* | 12680* | 9080* | 9080* | 7290* | 5850 | 5920 | 4110 | | | 4460* | 3290 | 11.39 |
| 2.0 m | | | 16350* | 15120 | 10510* | 8350 | 7930* | 5510 | 5750 | 3940 | | | 4590 | 3120 | 11.58 |
| 0 m | | | 7580* | 7580* | 11380* | 7760 | 7720 | 5210 | 5590 | 3790 | | | 4610 | 3120 | 11.41 |
| -2.0 m | | | 7770* | 7770* | 11240* | 7470 | 7530 | 5030 | 5500 | 3710 | | | 4910 | 3320 | 10.86 |

CX290D SL - Standard arm 5.8 m length, 600 mm shoes.

| | | | | | | | | | | | | | | | |
|--------|--|--|--------|--------|--------|-------|-------|-------|-------|-------|-------|------|-------|-------|-------|
| 14.0 m | | | 7510* | 7510* | | | | | | | | | 6640* | 6640* | 4.46 |
| 12.0 m | | | | | 7590* | 7590* | 4730* | 4730* | | | | | 4600* | 4600* | 8.05 |
| 10.0 m | | | | | | | 6380* | 6380* | 4190* | 4190* | | | 3960* | 3960* | 10.07 |
| 8.0 m | | | | | 7080* | 7080* | 6350* | 6350* | 5820* | 4500 | | | 3680* | 3530 | 11.40 |
| 6.0 m | | | | | 7770* | 7770* | 6690* | 6320 | 5930* | 4410 | 4510* | 3210 | 3560* | 3080 | 12.26 |
| 4.0 m | | | 12290* | 12290* | 9010* | 9010* | 7280* | 5990 | 6060 | 4240 | 4560 | 3150 | 3570* | 2840 | 12.75 |
| 2.0 m | | | 15910* | 15300 | 10240* | 8440 | 7920* | 5600 | 5850 | 4040 | 4460 | 3060 | 3670* | 2730 | 12.92 |
| 0 m | | | 6400* | 6400* | 11320* | 7770 | 7770 | 5260 | 5660 | 3860 | 4380 | 2980 | 3900* | 2740 | 12.77 |
| -2.0 m | | | 6310* | 6310* | 11260* | 7420 | 7540 | 5050 | 5540 | 3750 | | | 4450 | 3020 | 11.79 |

* The above loads (kg) are compliant to the ISO standards and refer to the excavator equipped without bucket. The indicated loads are no more than 87% of hydraulic system lift capacity or 75% of static tipping load. Values marked with an asterisk (*) are limited by the hydraulic lifting capacity.

**CNH INDUSTRIAL
 DEUTSCHLAND GMBH**
 CASE Baumaschinen
 Benzstr. 1-3 - D-74076 Heilbronn
 DEUTSCHLAND

CNH INDUSTRIAL FRANCE, S.A.
 16-18 Rue des Rochettes
 91150 Morigny-Champigny
 FRANCE

CNH INDUSTRIAL - UK
 First Floor, Barclay Court 2,
 Heavens Walk,
 Doncaster - DN4 5HZ
 UNITED KINGDOM

CNH INDUSTRIAL - SOUTH AFRICA
 Waterfall Business Park
 Bekker Street, Howick Close
 1685 Midrand - Johannesburg
 REPUBLIC OF SOUTH AFRICA

**CNH INDUSTRIAL
 MAQUINARIA SPAIN, S.A.**
 Avda. José Gárate, 11
 28823 Coslada (Madrid)
 ESPAÑA

CNH INDUSTRIAL ITALIA SPA
 Strada di Settimo, 323
 10099 San Mauro Torinese (TO)
 ITALIA

**CASE CUSTOMER CENTRE
 PARIS**
 RN 330 - Penchard
 77122 - Monthyon
 FRANCE

CNH INDUSTRIAL - MIDDLE EAST
 DAFZA - Dubai Airport Free Zone
 West Wing 4 B, Office 642
 P.O. Box 54588, Dubai,
 UNITED ARAB EMIRATES

NOTE: Standard and optional fittings can vary according to the demands and specific regulations of each country. The illustrations may include optional rather than standard fittings - consult your CASE dealer. Furthermore, CNH Industrial reserves the right to modify machine specifications without incurring any obligation relating to such changes.

Conforms to directive 2006/42/EC

CASE
00800-2273-7373

The call is free from a land line.
 Check in advance with your Mobile Operator if you will be charged. Toll free number not available from all calling areas.