

**D-SERIES CRAWLER EXCAVATORS
CX750D / CX750D ME**

CASE
CONSTRUCTION



**TIER 4
FINAL
EU STAGE IV**

**IT'S TIME
FOR MORE**

www.casece.com
**EXPERTS FOR THE REAL WORLD
SINCE 1842**

MAIN REASONS TO CHOOSE THE D-SERIES



POWER TO PERFORM

- 512 hp engine power
- Best-in-class lifting capacity
- New electronically controlled hydraulic pumps for fast working cycles



HIGH VERSATILITY

- Dedicated model for mass excavation to provide outstanding breakout force performance
- Working modes easily adapt to every work load



HIGH EFFICIENCY

- Energy saving system to take advantage of all fuel saving opportunities
- High levels of AdBlue autonomy with large AdBlue tank and low additive consumption



TIER4 FINAL/STAGE IV ENGINE

- Selective Catalytic Reduction after-treatment system and Diesel Oxidation Catalyst
- DPF-free solution saves time and maintenance costs, in addition to delivering a powerful and fuel efficient performance



HIGH RELIABILITY

- Reliability and durability with the redesigned arm, boom and undercarriage
- CX750D: standard hydrostatic reversible fan to match the real cooling demand, reducing power absorption and reducing maintenance needs thanks to the reversing mode



SAFE OPERATION

- All filters now located in the pump compartment
- Wider catwalk for a safer maintenance
- Factory fitted travel alarm for greater safety on the jobsite around the machine



COMFORTABLE CAB

- Extra spacious cab
- Fully adjustable workstation
- New high back seat



BETTER VISIBILITY

- Standard rear and side cameras
- Optional CASE maximum view monitor (270° rear & side view)
- New LED working light package, is more than three times brighter than its halogen equivalent

ENGINE

CX750D

CX750D ME

Model _____ ISUZU AH-6WG1X
 Type _____ Water-cooled, 4-cycle diesel, 6-cylinder in line,
 high pressure common rail system (electric control), Turbocharger with air cooled intercooler,
 without cooling fan, SCR system
 Number of cylinders / Displacement (l) _____ 6/15.7
 Emissions level _____ Tier 4 final / Eu stage IV
 Bore & stroke (mm) _____ 147 x 154

Rated flywheel horse power

ISO 14396 (kW / hp) _____ 382 / 512 at 1800 min⁻¹
 With fan pump (kW / hp) _____ 343 / 460

Maximum torque

ISO 14396 (Nm) _____ 2200 at 1450 min⁻¹

HYDRAULIC SYSTEM

Main pumps _____ 2 variable displacement axial piston pumps
 with regulating system
 Max. oil flow (l/min) _____ 2 x 472 at 1800 min⁻¹

Working circuit pressure

Boom/Arm/Bucket (MPa) _____ 31.4
 With auto power boost (MPa) _____ 34.3
 Swing circuit (MPa) _____ 27.9
 Travel circuit (MPa) _____ 34.3

Pilot pump

_____ 1 gear pump
 Max. oil flow (l/min) _____ 27
 Working circuit pressure (MPa) _____ 4.4

Boom Cylinders

Bore (mm) _____ 190
 Stroke (mm) _____ 1805

Arm Cylinders

Bore (mm) _____ 210
 Stroke (mm) _____ 2055

Bucket Cylinders

Bore (mm) _____ 185 | _____ 200
 Stroke (mm) _____ 1465 | _____ 1450

SWING

Maximum swing speed (min⁻¹) _____ 6.7
 Swing torque (kNm) _____ 241

UNDERCARRIAGE

High travel speed (km/h) _____ 4.3
 Low travel speed (km/h) _____ 3.0
 Drawbar pull (kN) _____ 449
 Track shoes _____ 650 mm double grouser shoes,
 750 mm and 900 mm triple grouser shoes

CIRCUIT AND COMPONENT CAPACITIES

Fuel tank (l) _____ 900
 Hydraulic system (l) _____ 650
 Hydraulic reservoir (l) _____ 310
 Adblue tank (l) _____ 152

SOUND LEVEL

External guaranteed sound level
 (EU Directive 2000/14/EC) _____ LwA 108 dB(A)
 Operator cab sound pressure level
 (ISO 6396) _____ LpA 73 dB(A)

OPERATING WEIGHT AND GROUND PRESSURE

CX750D

with 3.55 m arm, 2.9 m³ bucket, 650 mm grouser shoes, operator, lubricant,
 coolant, full fuel tank

Weight (kg) _____ 71400
 Ground pressure (MPa) _____ 0,105
 Counterweight (kg) _____ 10400

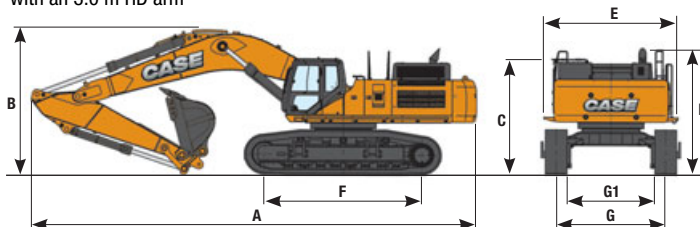
CX750D ME

with 3.0 m arm, 4.0 m³ bucket, 650 mm grouser shoes, operator, lubricant,
 coolant, full fuel tank

Weight (kg) _____ 72000
 Ground pressure (MPa) _____ 0,106
 Counterweight (kg) _____ 10400

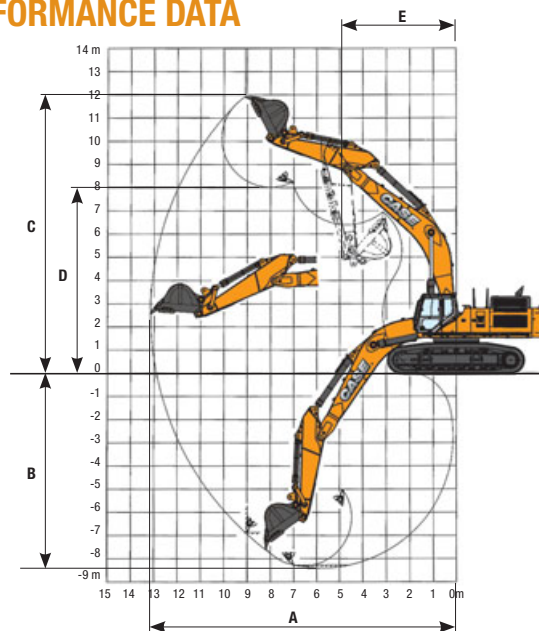
GENERAL DIMENSIONS

with an 3.0 m HD arm



		CX750D	CX750D ME
A	Overall length (with attachment)	mm 13380	12250
B	Overall height (to top of boom)	mm 4440	4960
C	Cab height	mm 3590	
D	Overall height (to top of guardrail)	mm 3950	
	Upper structure overall width (without catwalk)	mm 3700	
E	Upper structure overall width (with catwalk)	mm 4170	
F	Wheel base (center to center of wheels)	mm 4710	
G	Track gauge (Extended)	mm 3350	
G1	Track gauge (Retracted)	mm 2740	
	Undercarriage overall width (Extended) (with 650 mm shoes)	mm 4000	
	Undercarriage overall width (Retracted) (with 650 mm shoes)	mm 3390	
	Tail swing radius	mm 4050	

PERFORMANCE DATA



		CX750D	CX750D ME
	Boom length	mm 7700	6580
	Arm length	mm 3020 *	3020
A	Maximum reach	mm 12780	11730
B	Max digging depth	mm 7870	7180
C	Max digging height	mm 12100	11060
D	Max dumping height	mm 8090	6990
E	Min. Swing radius	mm 5830	5150

* Standard HD arm - Optional 3.55 HD, 4.1 and 5.00 m arms

DIGGING FORCE (ISO 6015)

CX750D with 3.0 HD arm and 2.9 m³ bucket

Arm digging force	kN 289
with auto power up	kN 316
Bucket digging force	kN 306
with auto power up	kN 334

CX750D ME with 3.0 HD arm and 4.0 m³ bucket

Arm digging force	kN 281
with auto power up	kN 307
Bucket digging force	kN 335
with auto power up	kN 366

Front. Side	REACH													
	2 m		4 m		6 m		8 m		10 m		12 m		At max reach	

RTC UNDERCARRIAGE - Super long arm 5.0 m length, 650 mm shoes. Maximum reach 12.40 m

10.0 m															10120*	10120*	9.81
8.0 m									11750*	11750*					9640*	9640*	11.07
6.0 m									12330*	11670					9590*	8560	11.86
4.0 m					20040*	20040*	15670*	15670*	13350*	11140	11420*	8160			9890*	7840	12.27
2.0 m					24230*	22660	17780*	14800	14430*	10570	11350	7900			10550*	7540	12.34
0 m			12640*	12640*	26660*	21180	19270*	13950	14610	10090	11130	7690			11030	7610	12.08
-2.0 m	10800*	10800*	19940*	19940*	26930*	20550	19660*	13490	14330	9830					11810	8140	11.46
-4.0 m	19190*	19190*	29900*	29900*	25110*	20540	18550*	13420	13860*	9860					12860*	9360	10.42
-6.0 m	30330*	30330*	28620*	28620*	20640*	20640*	14910*	13810							12580*	12170	8.81

RTC UNDERCARRIAGE - Long arm 4.11 m length, 650 mm shoes. Maximum reach 11.50 m

10.0 m															13150*	13150*	8.75
8.0 m									13230*	11740					12440*	11430	10.14
6.0 m							15150*	15150*	13540*	11510					12390*	9720	11
4.0 m					22380*	22380*	17070*	15620	14370*	11050					12560	8850	11.44
2.0 m					25980*	22170	18890*	14650	15100	10570					12170	8510	11.52
0 m					27430*	21110	19930*	13990	14710	10210					12440	8660	11.24
-2.0 m	11940*	11940*	21000*	21000*	26700*	20820	19720*	13700	14580	10080					13520	9380	10.57
-4.0 m	23290*	23290*	32680*	32680*	23800*	21040	17700*	13810							13890*	11120	9.43
-6.0 m			23400*	23400*	17620*	17620*									12870*	12870*	7.6

RTC UNDERCARRIAGE - Standard arm 3.55 m length, 650 mm shoes. Maximum reach 11.00 m

8.0 m															14220*	12640	9.49
6.0 m							15990*	15990*	14220*	11340					14030*	10570	10.41
4.0 m					23650*	23610	17780*	153902	14890*	10940					13550	9550	10.87
2.0 m					26770*	21840	19390*	14510	15040	10510					13120	9180	10.95
0 m					27520*	21040	20110*	13950	14730	10220					13460	9370	10.65
-2.0 m			22940*	22940*	26130*	20920	19470*	13770							14740*	10280	9.95
-4.0 m			29730*	29730*	22510*	21290	16680*	14020							14550*	12520	8.73
-6.0 m					14840*	14840*									12720*	12720*	6.71

RTC UNDERCARRIAGE - Short arm 3.0 m length, 650 mm shoes. Maximum reach 10.70 m

10.0 m															16360*	16360*	7.58
8.0 m							15630*	15630*							15220*	13150	9.16
6.0 m					20680*	20680*	16680*	16050	14860*	11120					14820*	10910	10.1
4.0 m					24650*	23000	18320*	15130	15290*	10800					14010	9850	10.58
2.0 m					27210*	21440	19690*	14320	14940	10420					13580	9490	10.67
0 m					27230*	20880	20080*	13850	14720	10210					14020	9760	10.36
-2.0 m			19010*	19010*	25240*	20390	18990*	13780							14670*	10820	9.63
-4.0 m			26380*	26380*	20910*	20910*	15170*	14210							13820*	13470	8.36

RTC UNDERCARRIAGE - ME Short arm 3.0 m length, 650 mm shoes. Maximum reach 9.53 m

8.0 m															16730*	16730*	7.78
6.0 m							17720*	16520							16020*	13800	8.88
4.0 m					24190*	24190*	19020*	15810							16310*	12170	9.42
2.0 m					27400	22900	20360*	15050							16580	11650	9.51
0 m					28270*	21990	20690*	14550							17280	12060	9.17
-2.0 m	22530*	22530*	37070*	37070*	26240*	21840	18690*	14520							17350*	13790	8.33
-4.0 m			27620*	27620*	19740*	19740*									15970*	15970*	6.82

* The above loads (kg) are compliant to the ISO standards and refer to the excavator equipped without bucket. The indicated loads are no more than 87% of hydraulic system lift capacity or 75% of static tipping load. Values marked with an asterisk (*) are limited by the hydraulic lifting capacity.